



Figure 1

Steelcase NEXT Student Design Competition

Buffalo State Fall 2020 | Interior Design V
Instructor: Jörg Schneir

Table of Contents

Concept Statement.....3

Office Design Research.....4

Design Process Work.....7

First Iterations.....8

Final Floor plans.....10

Reflected Ceiling Plans.....12

Renderings.....13

References.....21



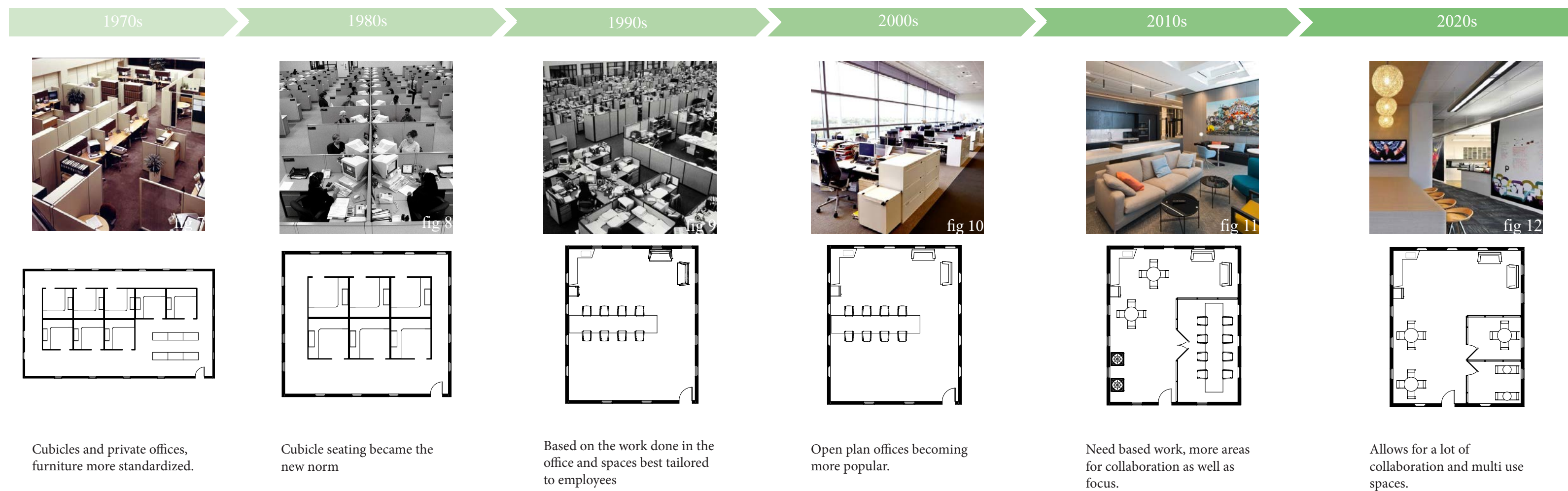
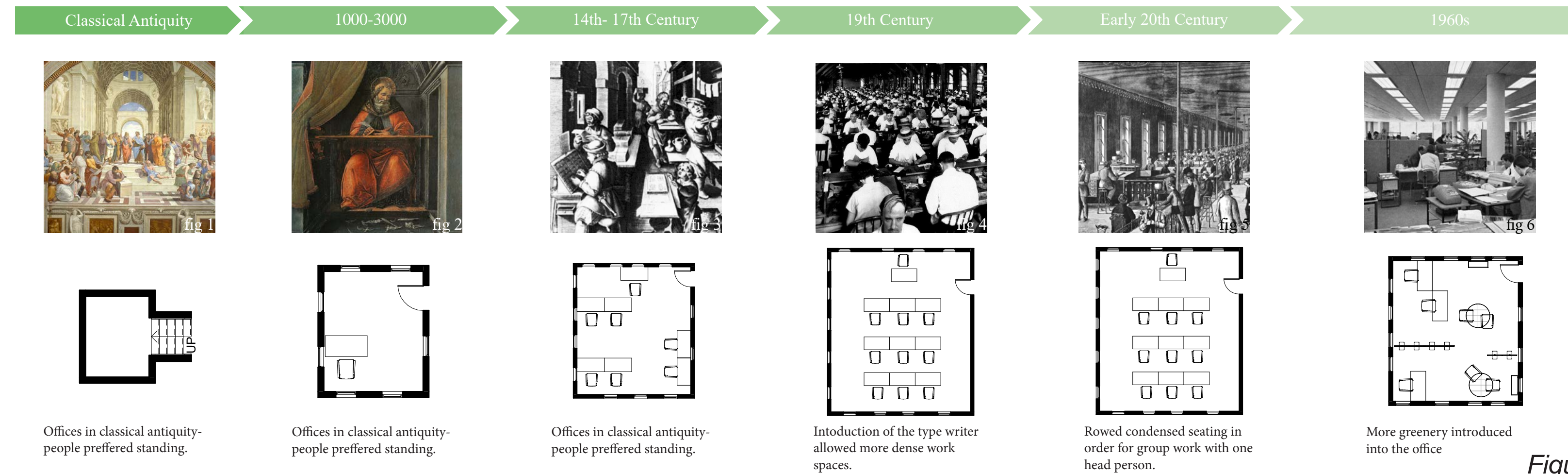
Figure 2

Concept Statement

Goals targeted for the NEXT space include incorporating company branding while honoring local culture, increasing employee engagement, and improve employee well-being. Drawing inspiration from the lively city of Atlanta, I wanted to create a space that allowed nature to come back into the city. Creating a biophilic design that incorporates a lot of green life within it was important to me because it promotes well-being and life in a space. It is not only important to me to incorporate plants but incorporate sustainable measures as well in order to create environmental change. All wood in the space is reclaimed in order to avoid more impact to deforestation and most other materials will be locally sourced in order to cut emissions. Indoor air quality will not only be improved by plants but by integration of Covid-19 principles, there is plenty of room for circulation, surfaces will be maintained regularly, and gatherings in small spaces will be avoided. The floor plan allows for a lot of touch down meetings to happen as well as collaboration through furniture arrangements and placement. For collaboration, diverse talents, and brand representation to be successful in a space, all must work together in different ways that allow the users of the space to feel in control.

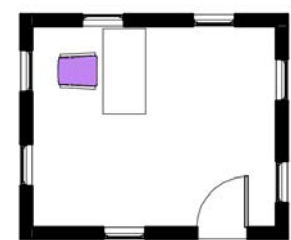
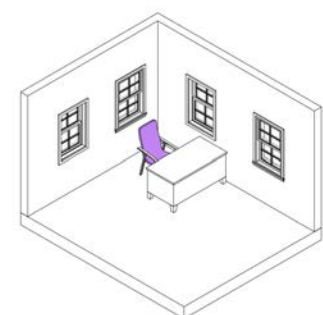
Office Design Research

To begin the process of researching office design, we were assigned to study the overall evolution of office design. In order to see what works and what does not, as well as see what technological advancements allow for the development of offices. Depicted here is the evolution of office Design and the reasoning behind it

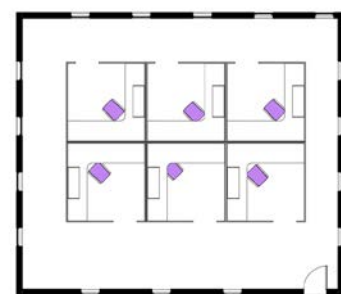
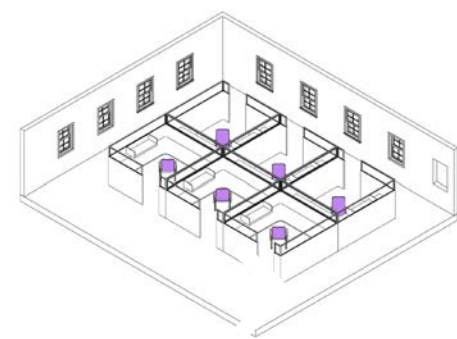


Office Design Research

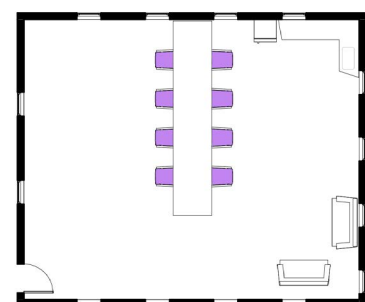
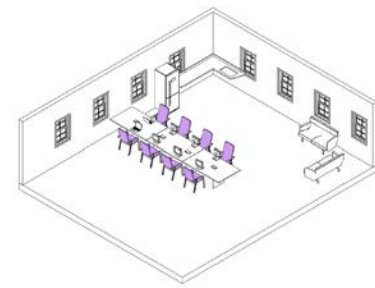
In order to fully understand the programming requirements of the NEXT space, I laid out the different spaces that were required for the new office. Took into consideration their square footage and the amount of people that need to fit in the



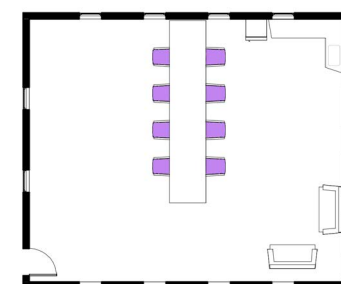
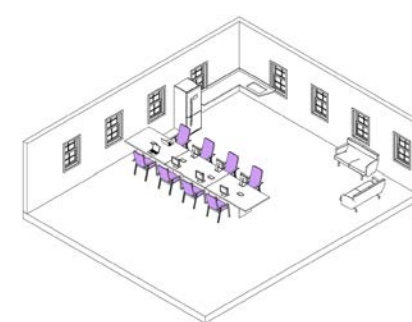
Hierarchical/Status driven
Assigned seating and singular perimeter offices.



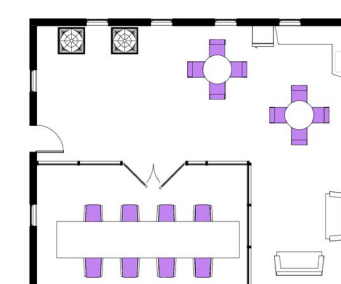
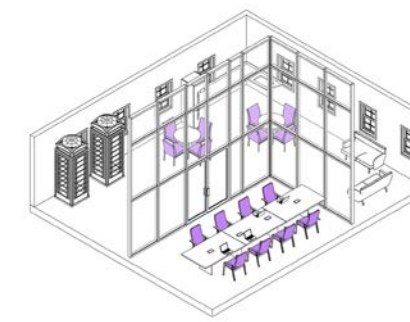
Equitable and Accessible
High paneled cubicals that separate individuals in the workplace. Assigned seating



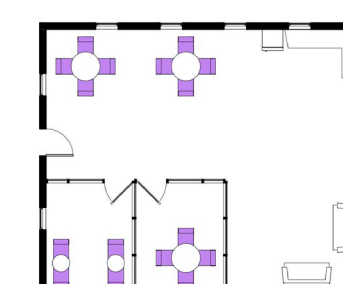
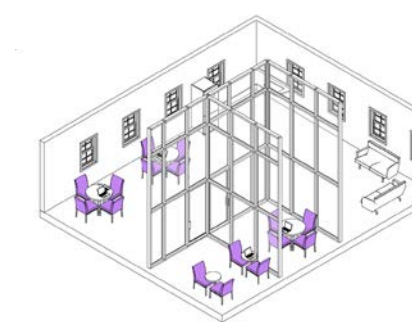
Open and Accessible
Lowered panels for more communication, more access to natural light. Assigned Seating



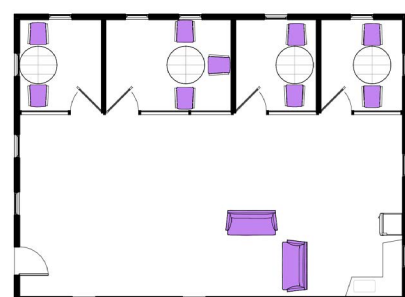
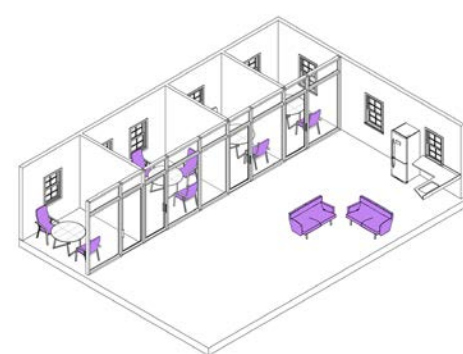
Effective and Variety
Allows people in the workplace to choose where to sit, no assigned seating.



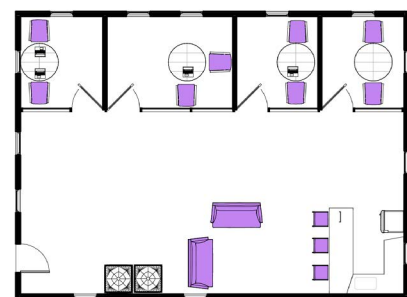
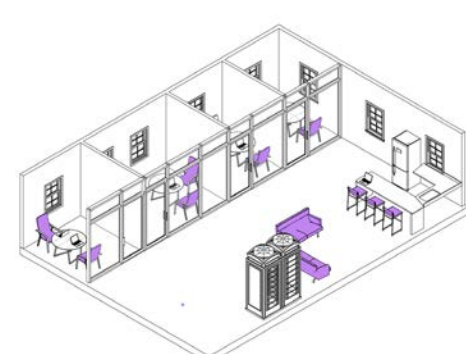
Community
Space as a service to employees. Allows more collaboration. Access to communal spaces.



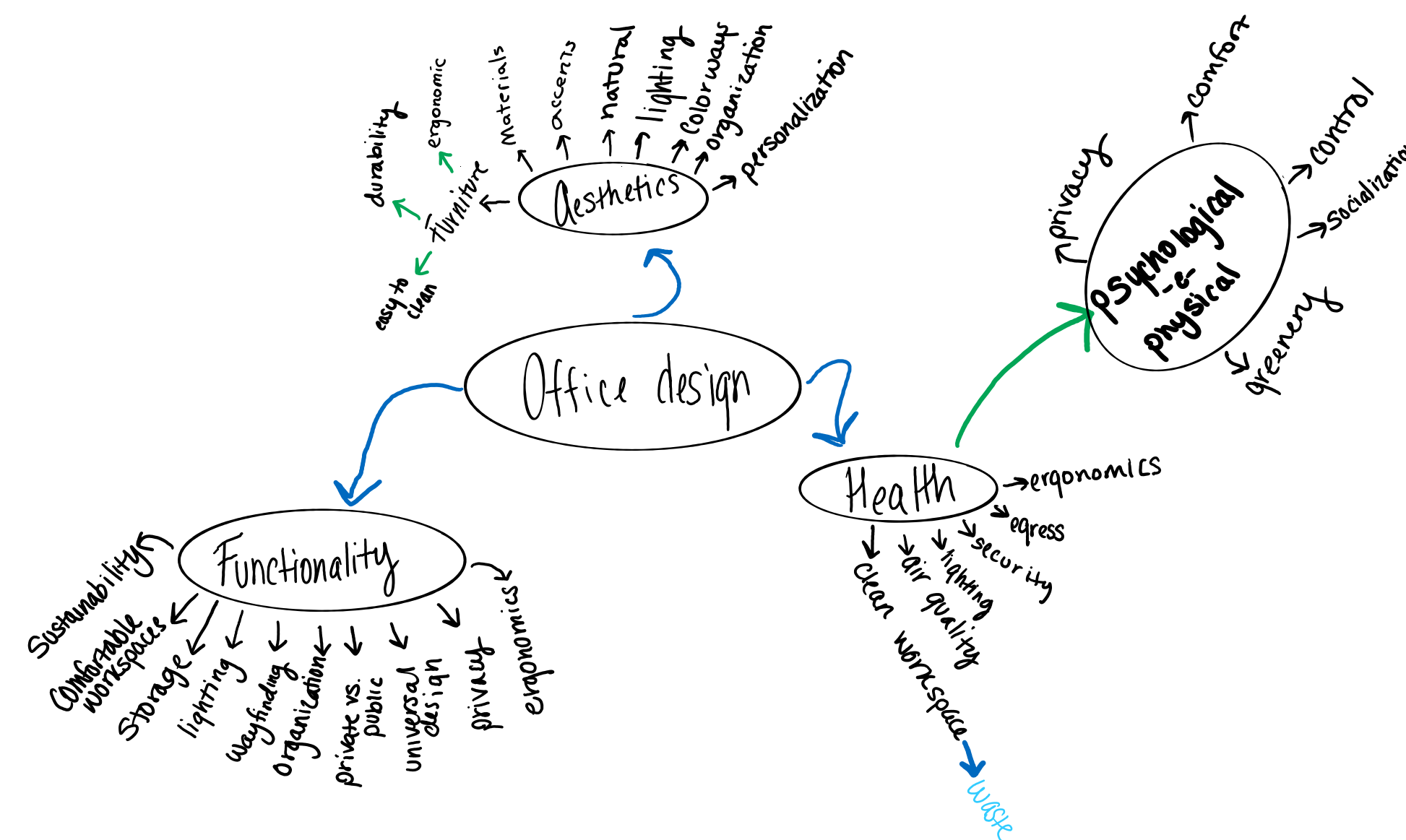
Team based and Sense of Belonging
Wide variety of task-based settings assigned for groups. Unassigned for individuals.



Gentrification and Agile
Scrum spaces for creative and innovative teams. Communal spaces within zones.



Curated Solutions and Tailored
human centric spaces, access to community amenities and spaces. assigned and unassigned seating, function driven.



Office Design Research

The next step in developing the design was researching and finding ways to incorporate a monumental staircase into the office. Taking inspiration from a social staircase, allowing the stairs to function as a place of socialization and inspiration while keeping the environment professional and diverse. The best fit for my project was the platform type staircase, taking a more linear approach making it sophisticated and influences collaboration.

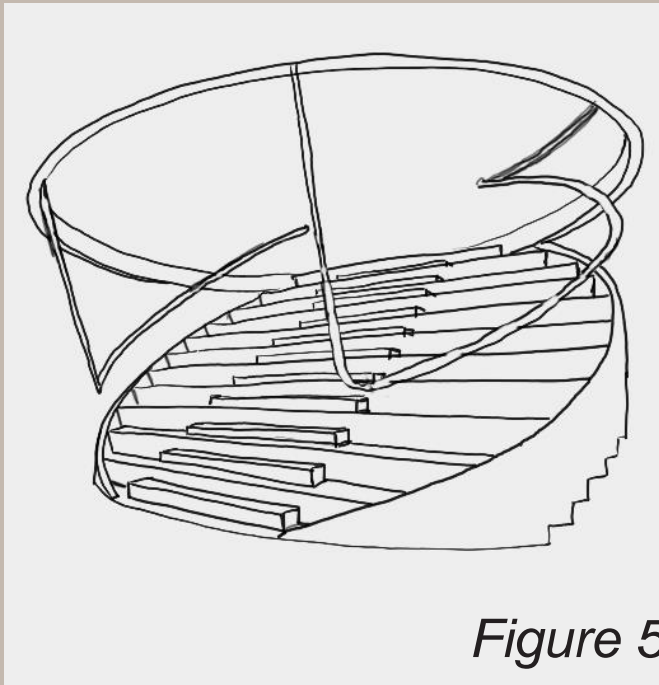


Figure 5

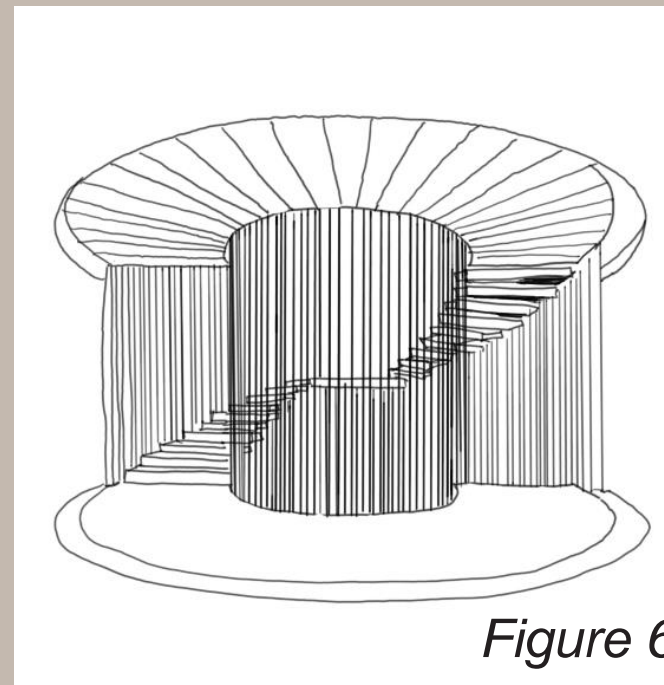


Figure 6

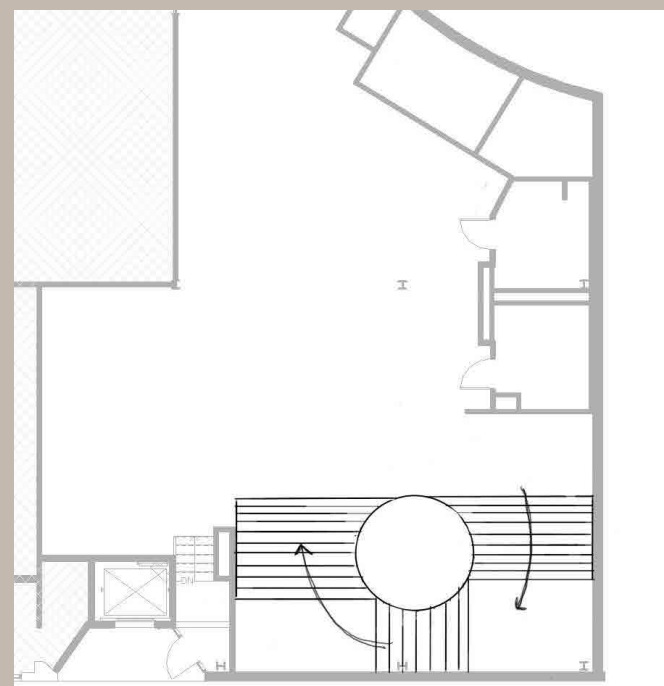
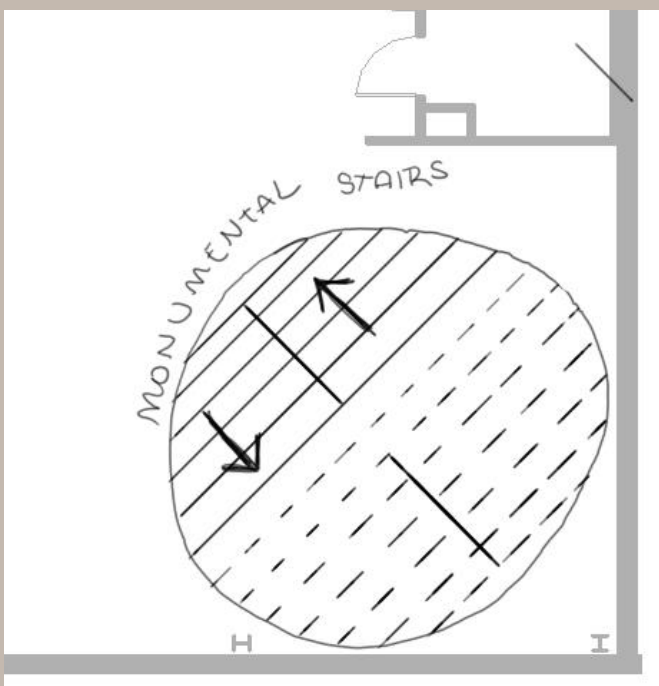
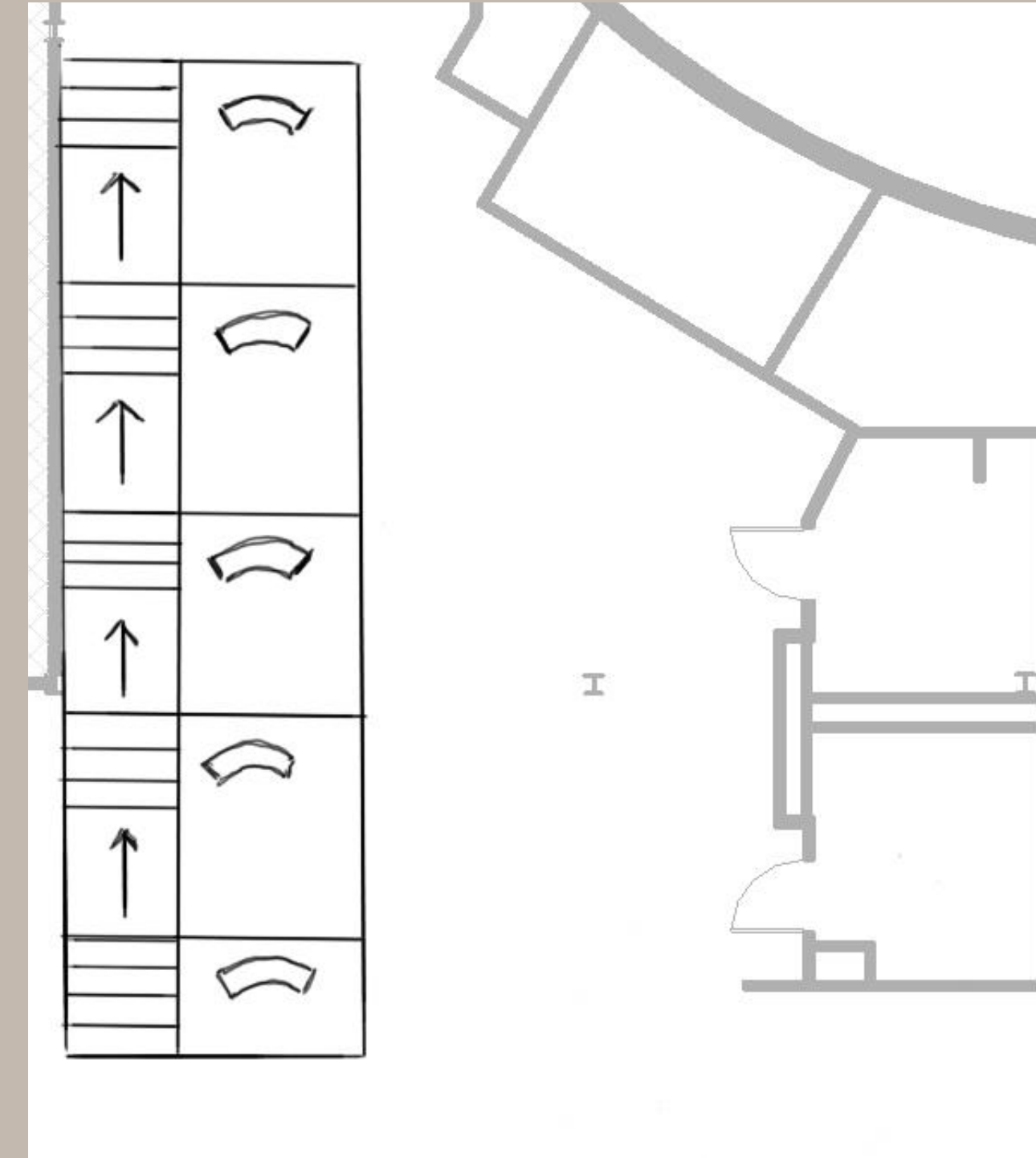
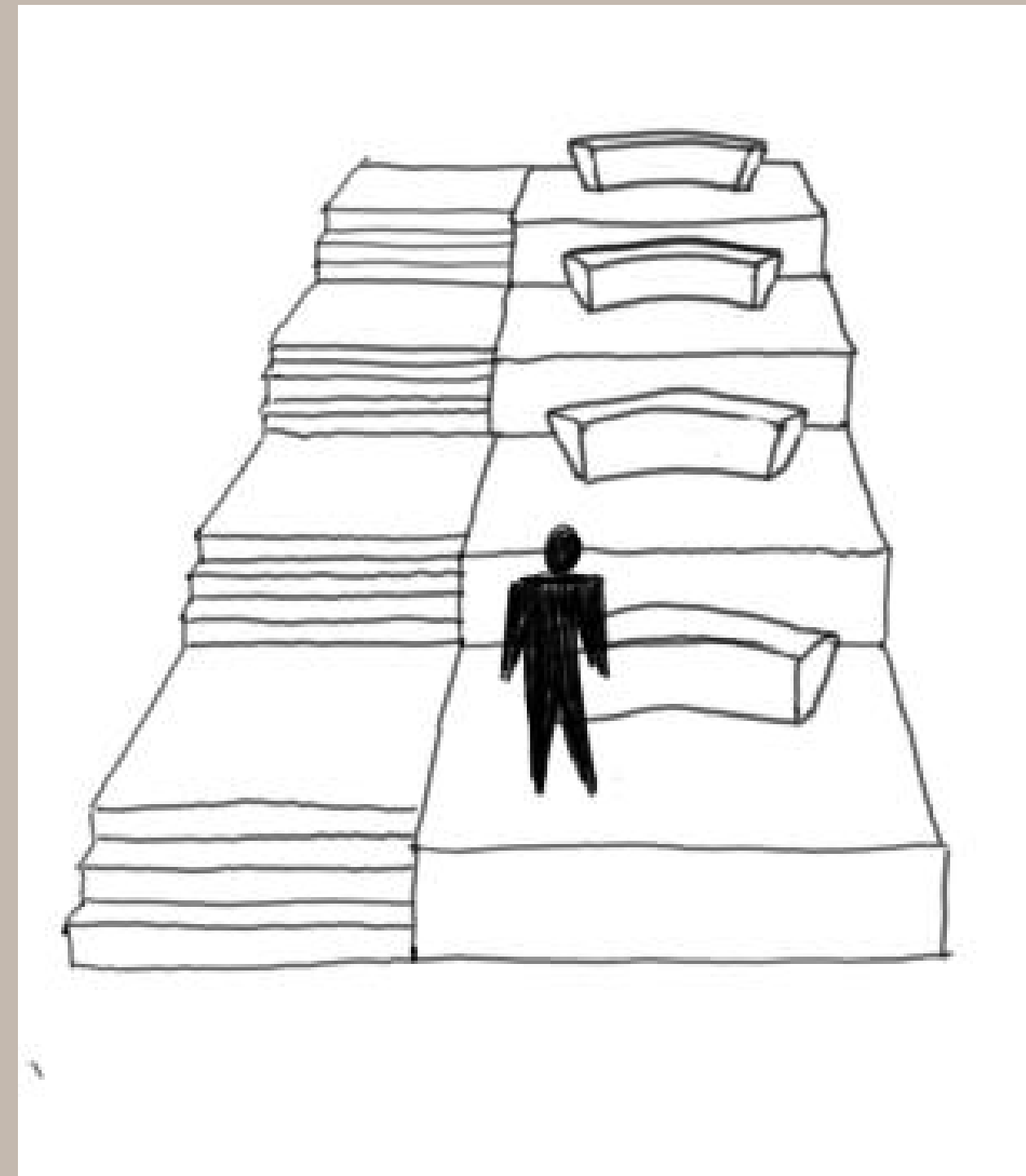
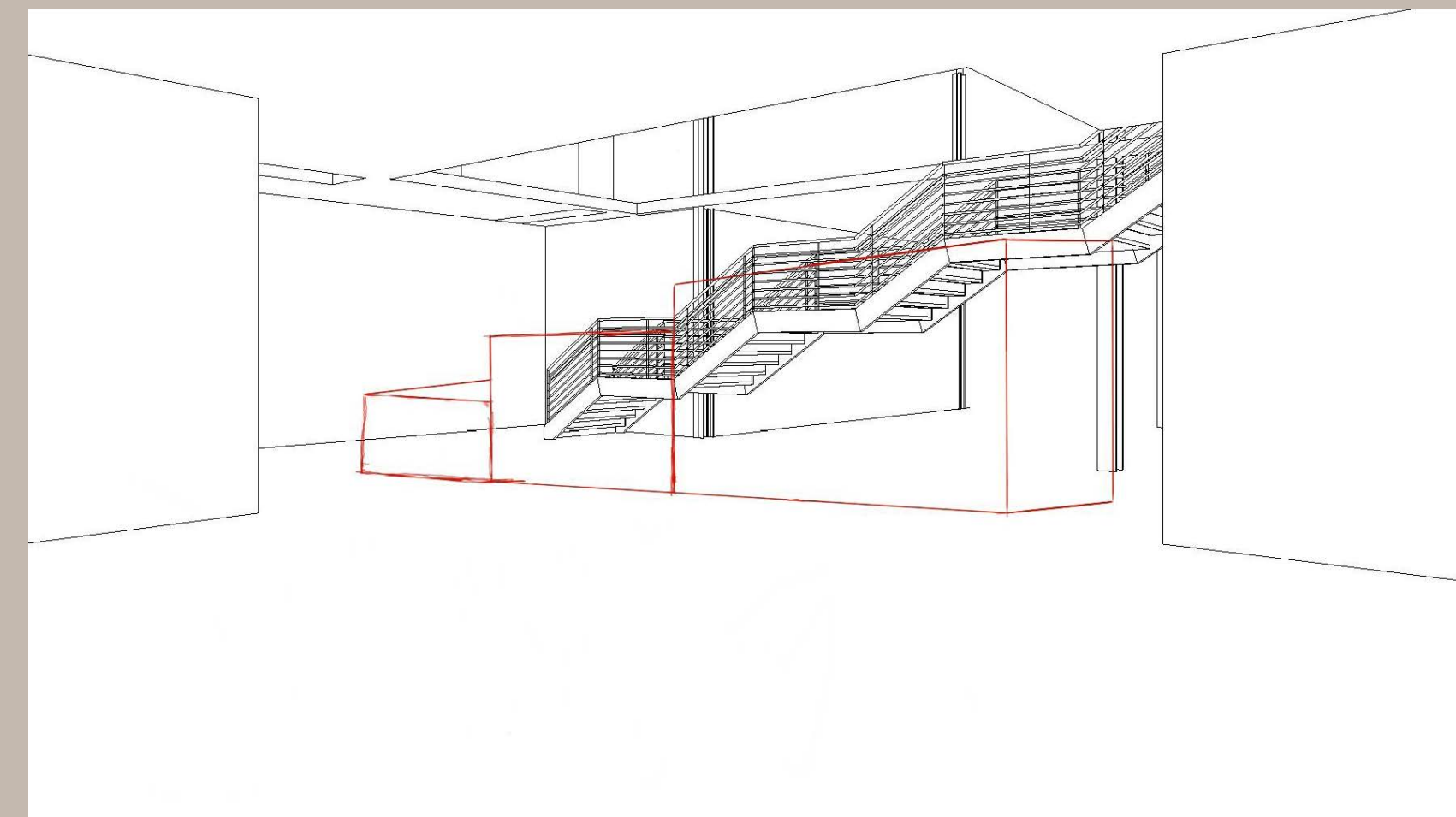


Figure 7

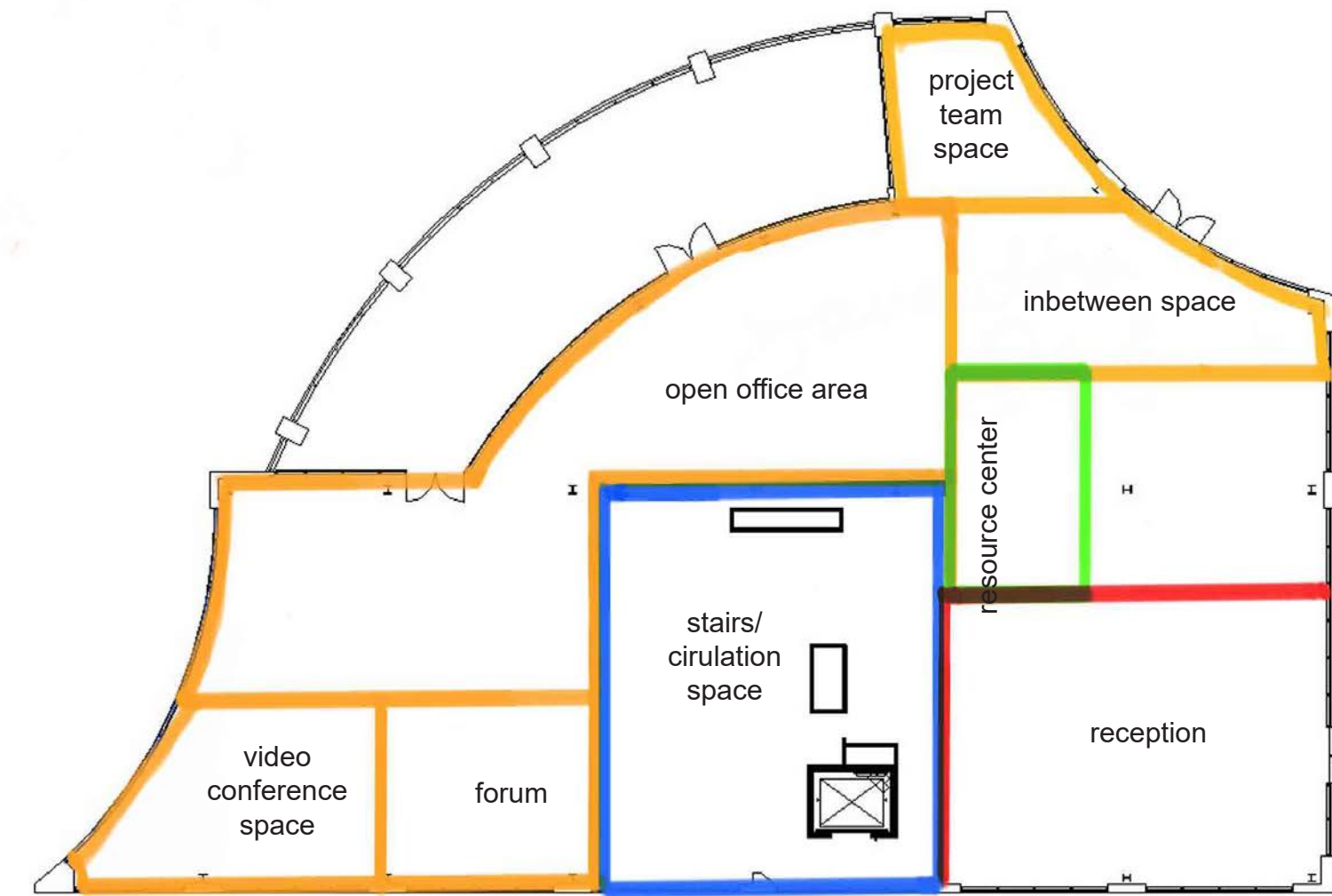


Figure 8

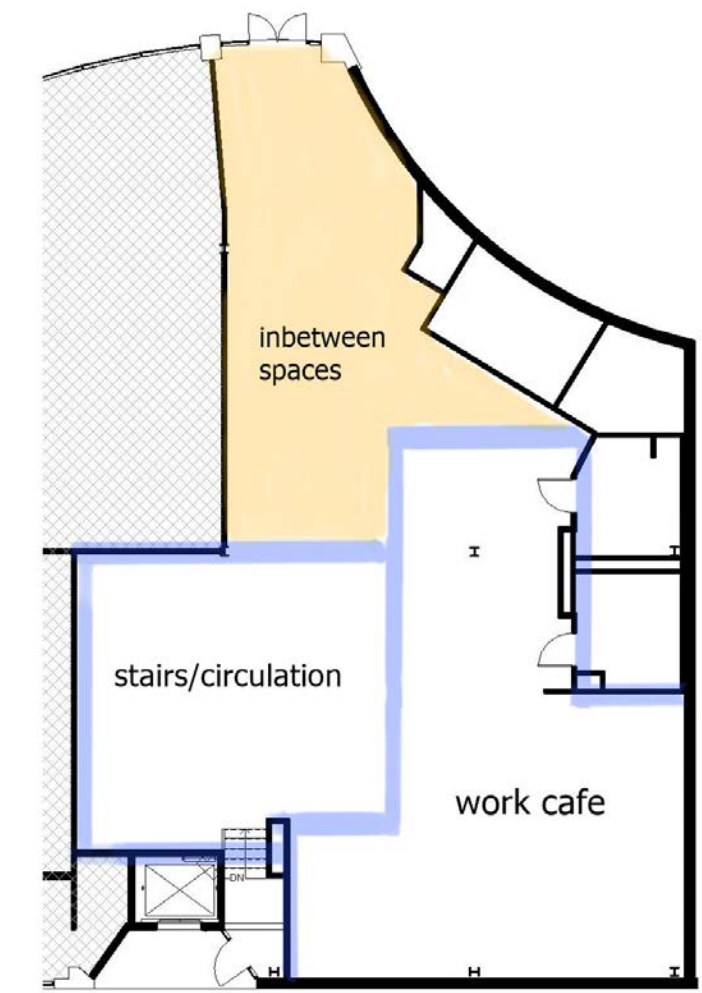


Design Process Work

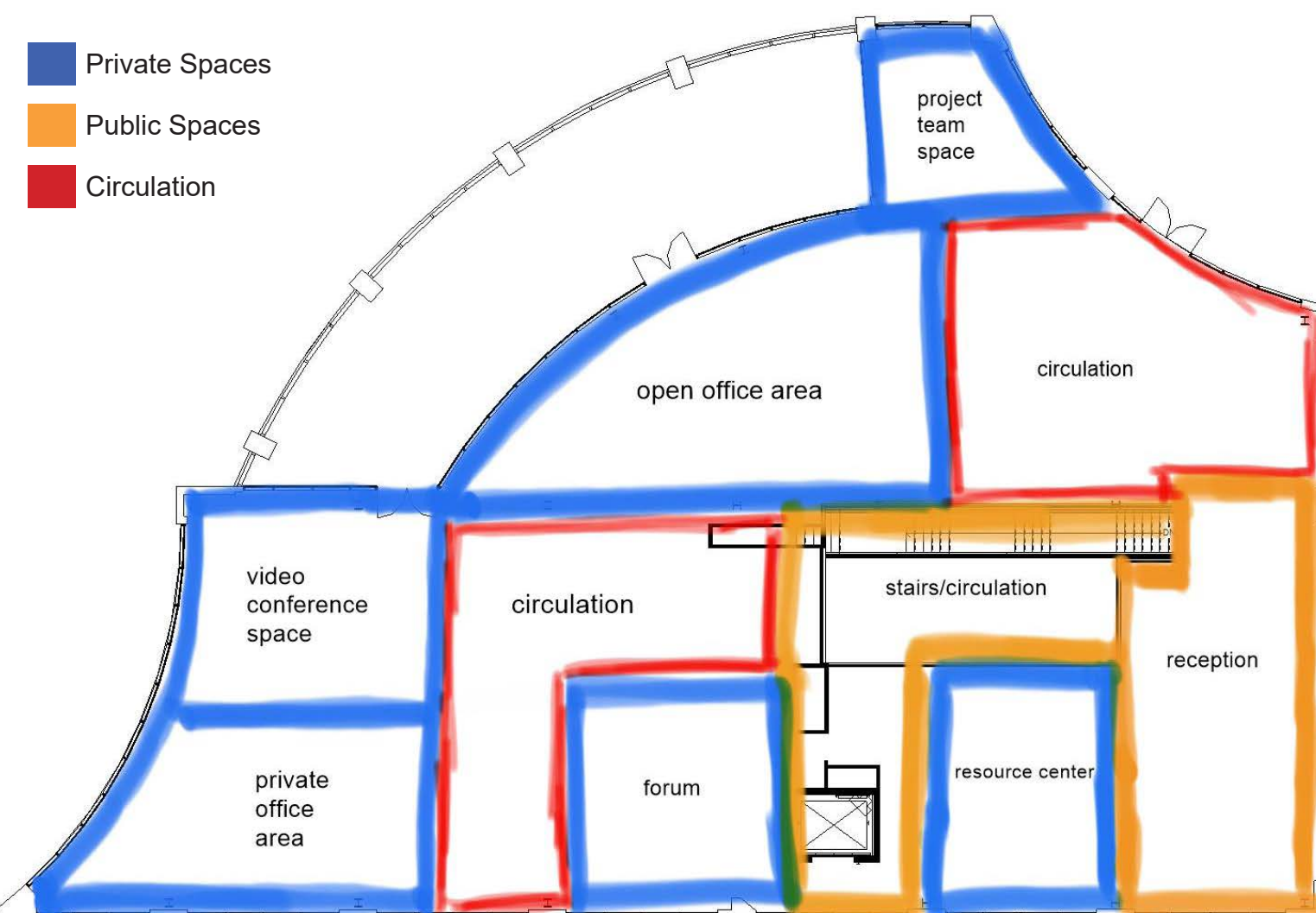
Working around the grand staircase and central circulation space, I wanted to divide the spaces between public and private for the overall office. The front spaces near the entrances would be the area where most guests would have access to. As you travel further into the space, the quieter and more private the spaces get.



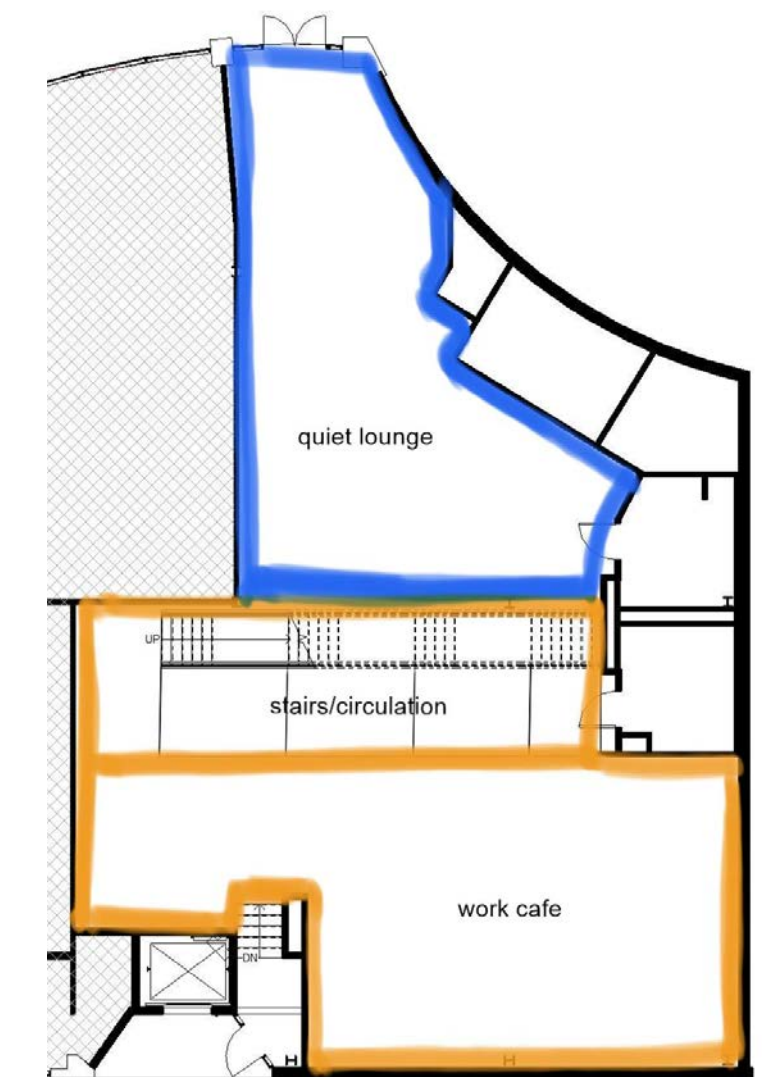
BLOCKING DIAGRAM LEVEL 2



BLOCKING DIAGRAM LEVEL 1

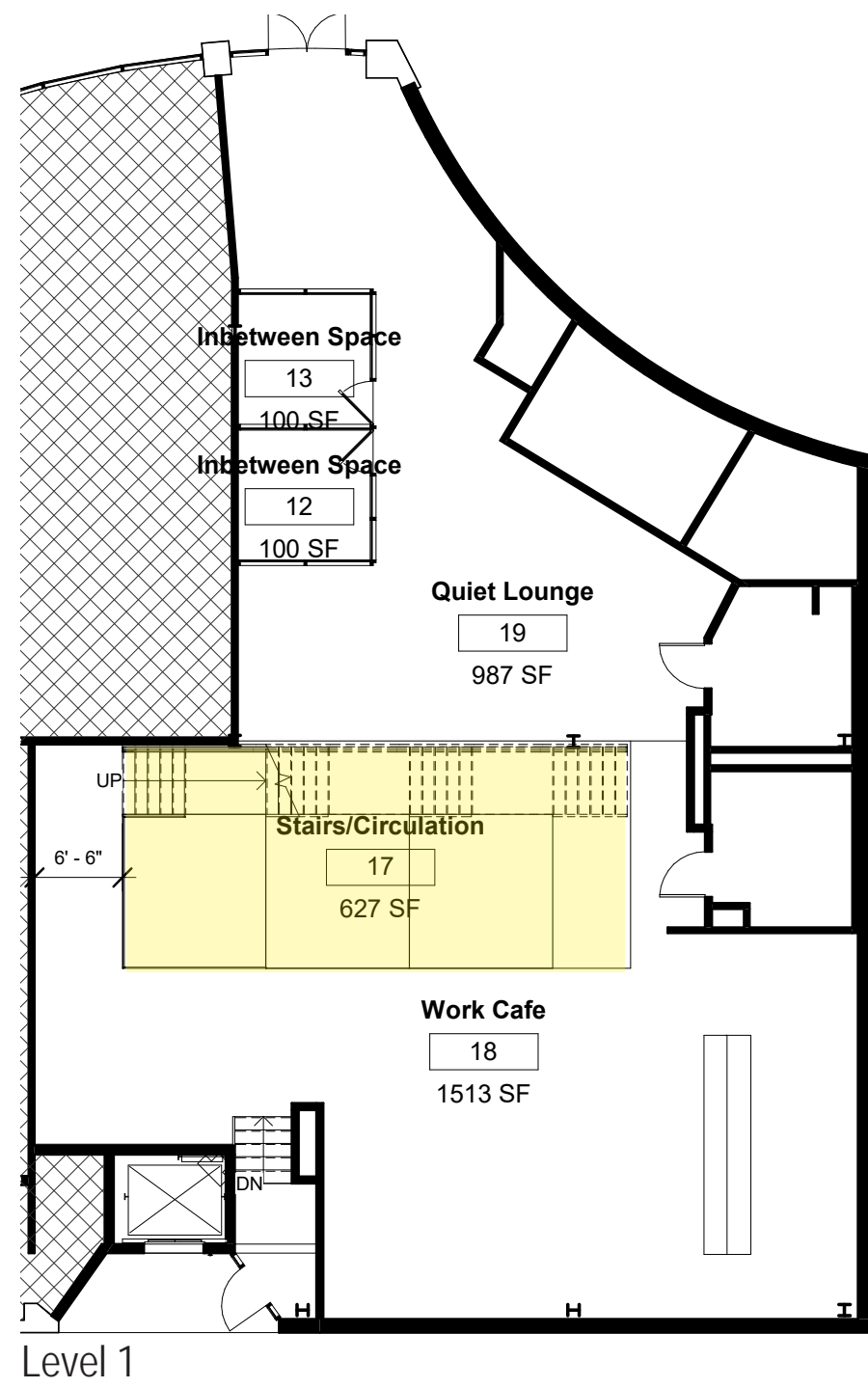


BLOCKING DIAGRAM LEVEL 2

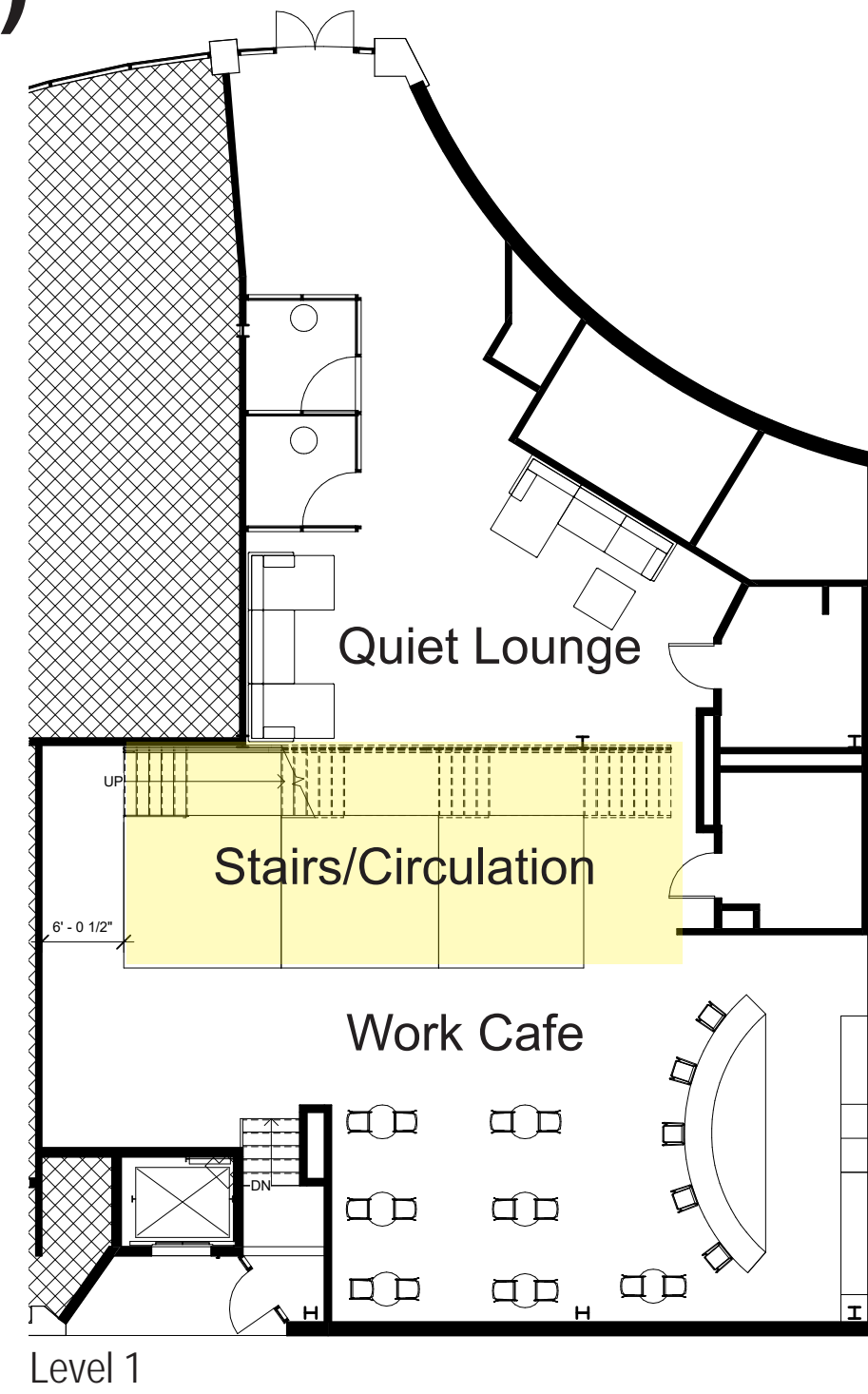


BLOCKING DIAGRAM LEVEL 1

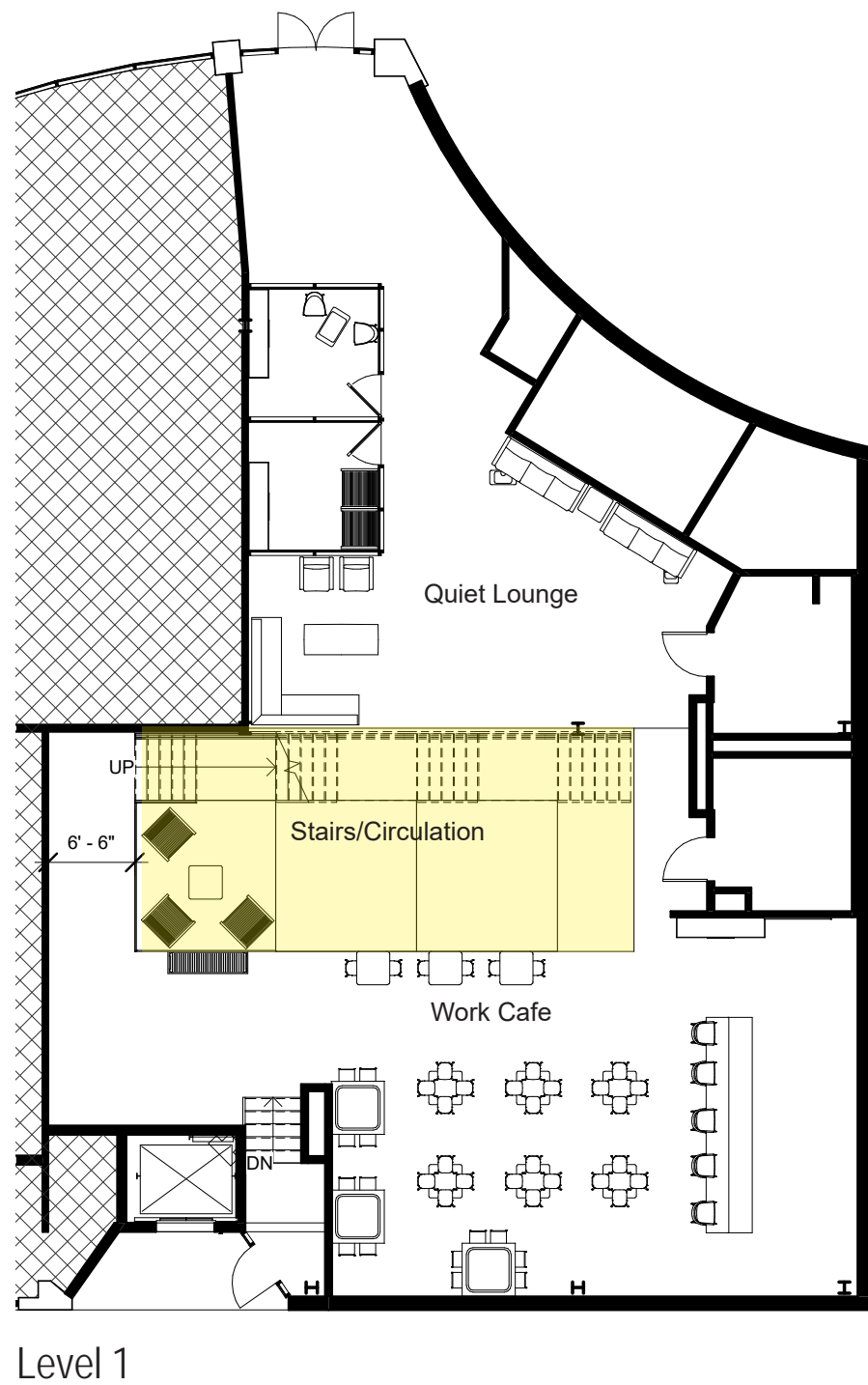
1)



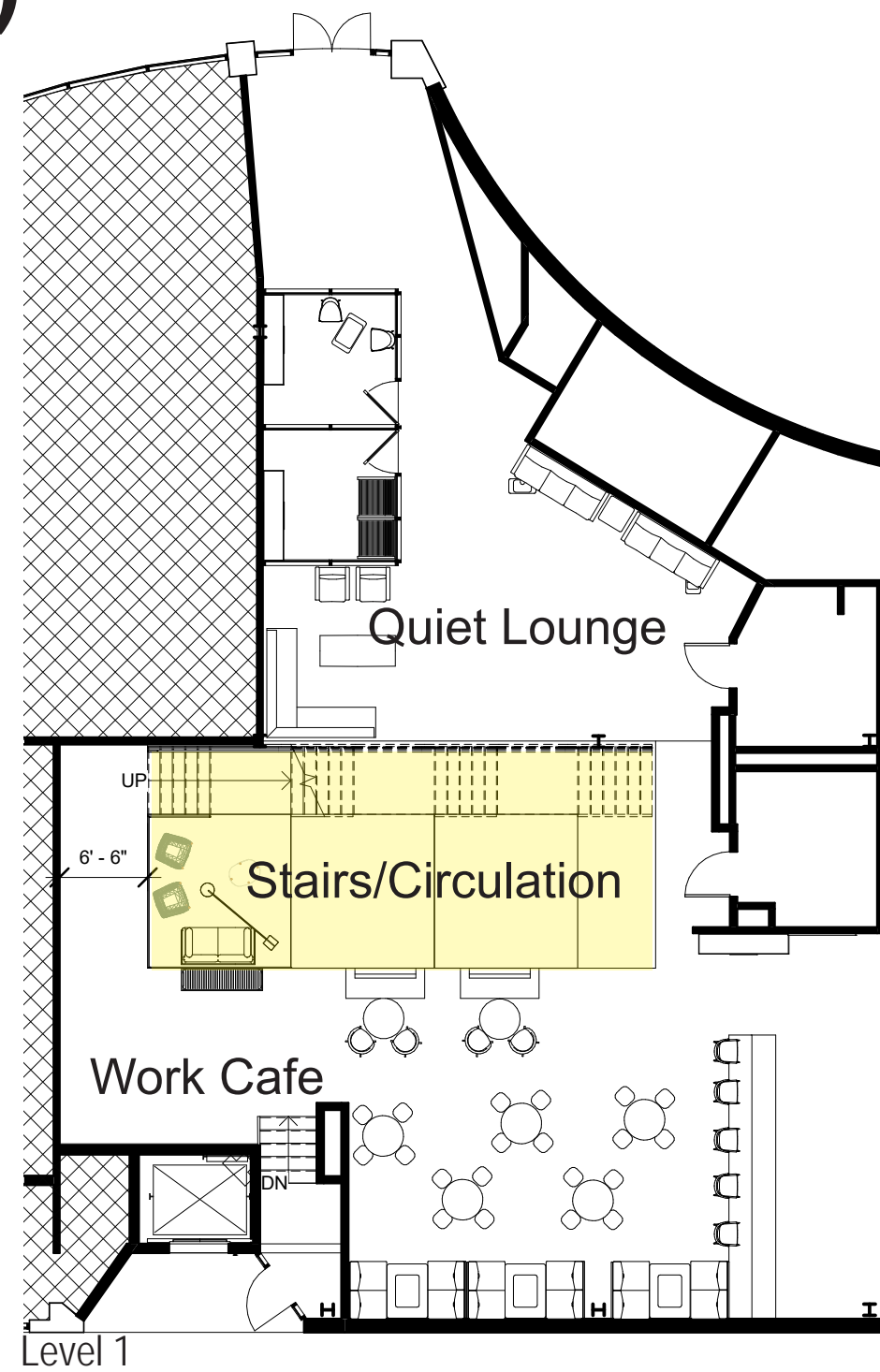
2)



3)



4)



Preliminary Plans

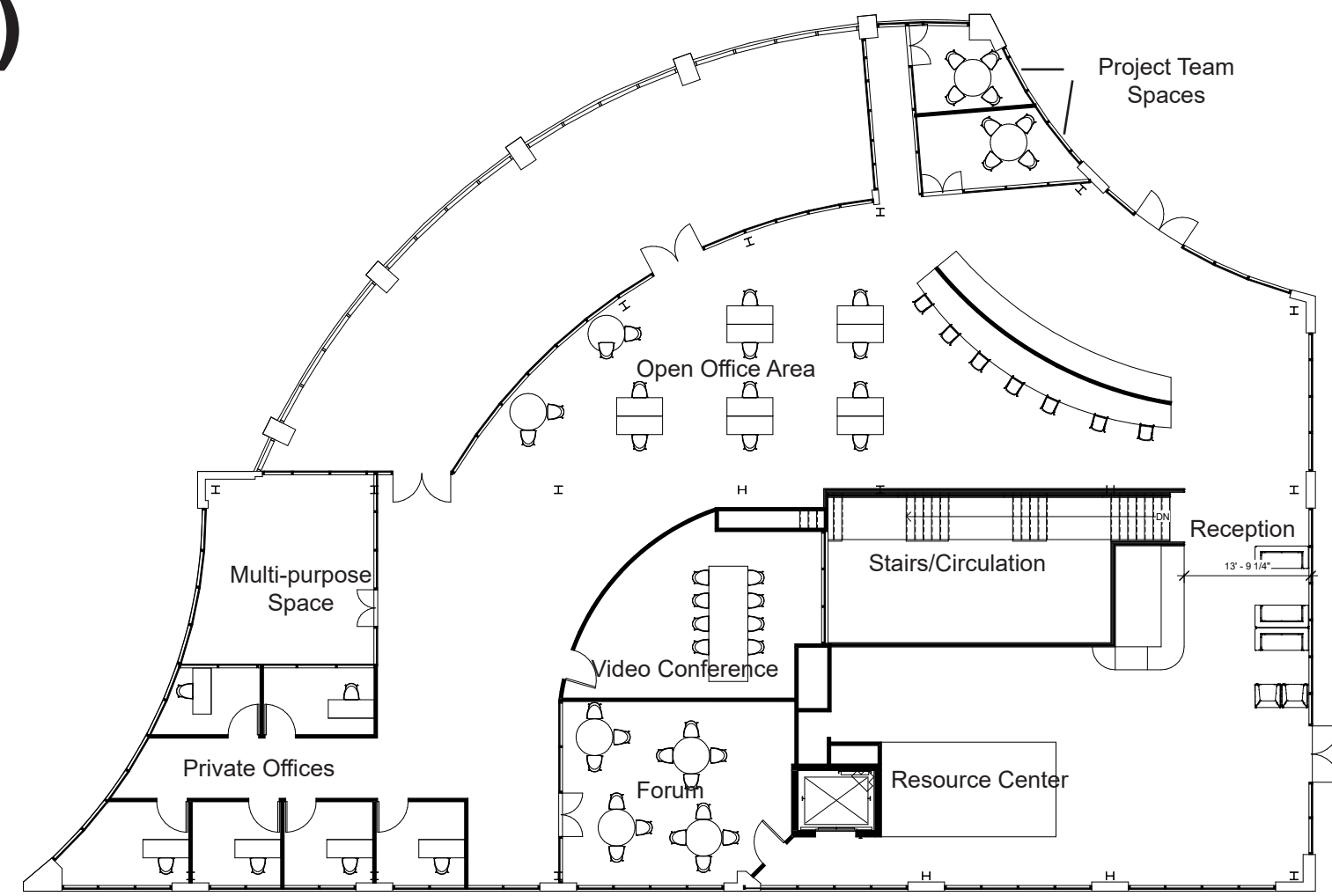
Level 1

For the spaces downstairs, I wanted to make the social stairs the center of the design, (highlighted in yellow) entering directly into the work cafe and working your way under the stairs into a quiet lounge with private enclaves and seating areas.

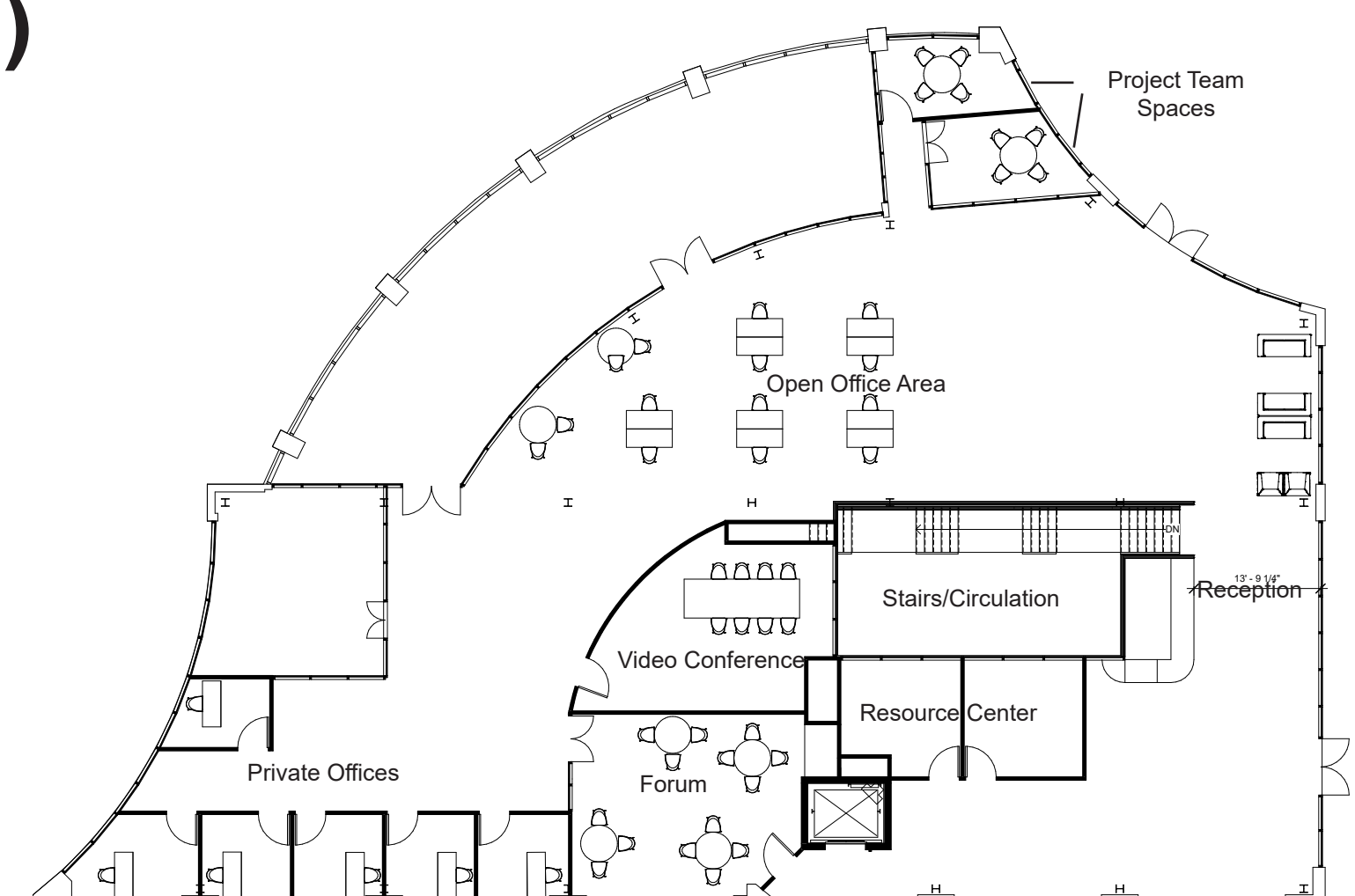
In the first 2 iterations, I was playing with the sizing of the platforms in comparison to the stairs. The final solution can be seen in the fourth plan, where there is access to each platform from each respective landing.

The Work Cafe is a space that evolved a lot throughout the making of the floor plan. The location of the space works well in plan, being separated from a quiet lounge by the massive social stairs. The casework and arrangement of furniture was something that I made sure to disperse well for COVID regulations, while keeping seating conditions ideal for employees.

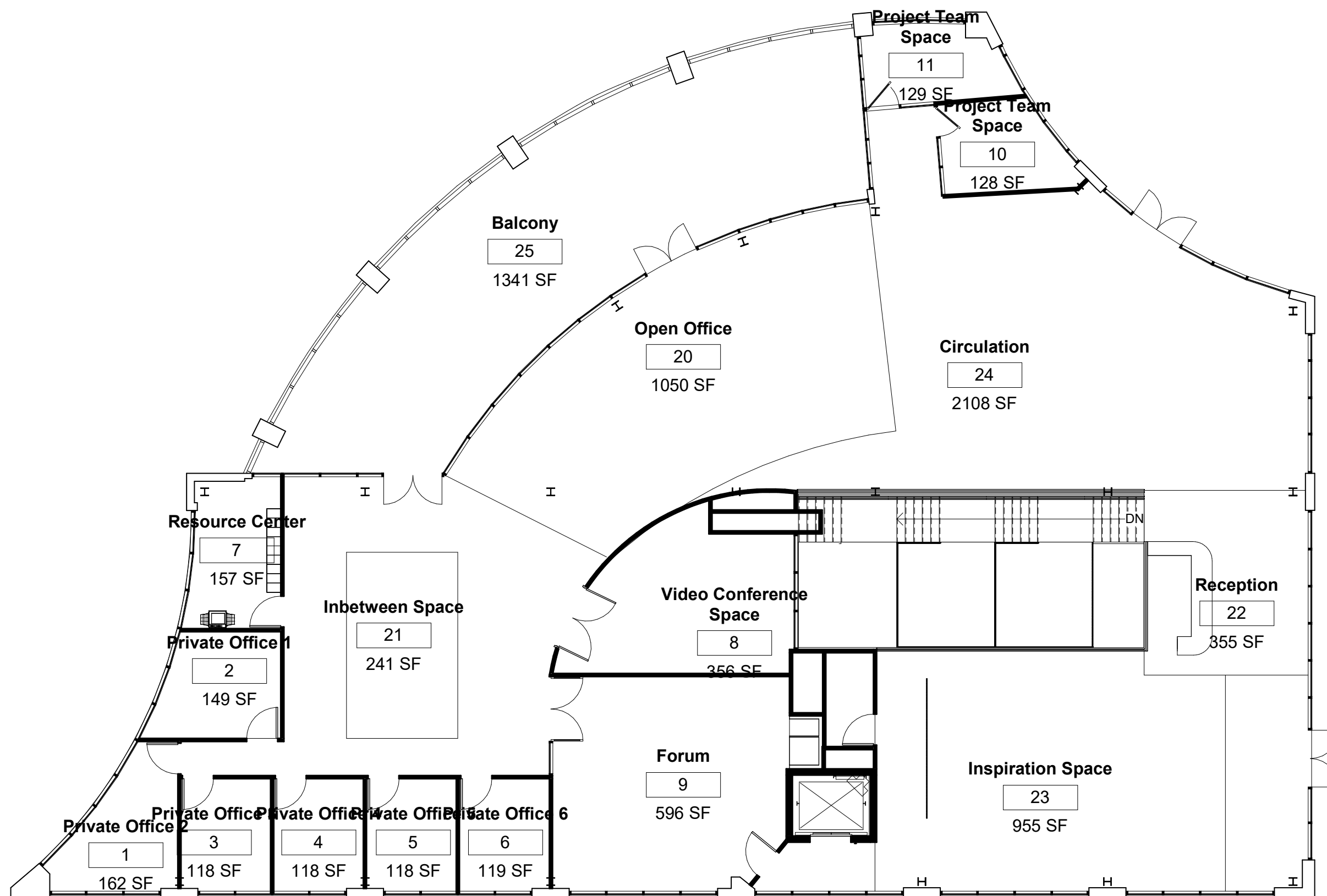
11)



2)



3)



Preliminary Plans

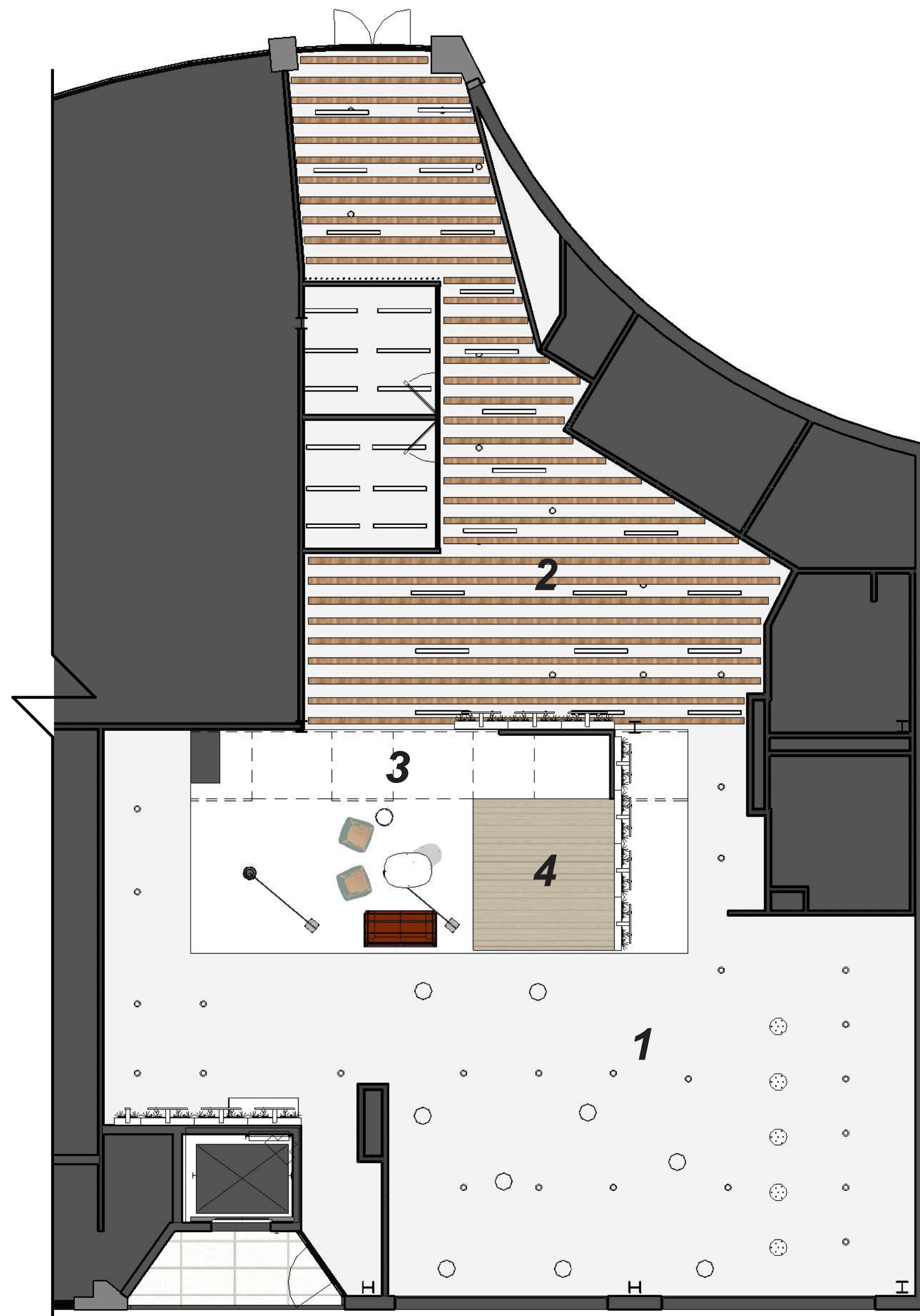
Level 2

Following the bubble diagrams, I laid out the spaces accordingly with appropriate square footage and place holder furniture. While discussing placement of spaces with my professor, it was decided to move the resource center away from the stairs, allowing the stairs to be visible from all points.

The inspiration space put on the side of the staircase in order to be used by both guests and employees. Keeping the overall private and public division in the space, there are partition walls dividing the spaces. Ensuring there was ample circulation space throughout the floor plan due to COVID precautions.

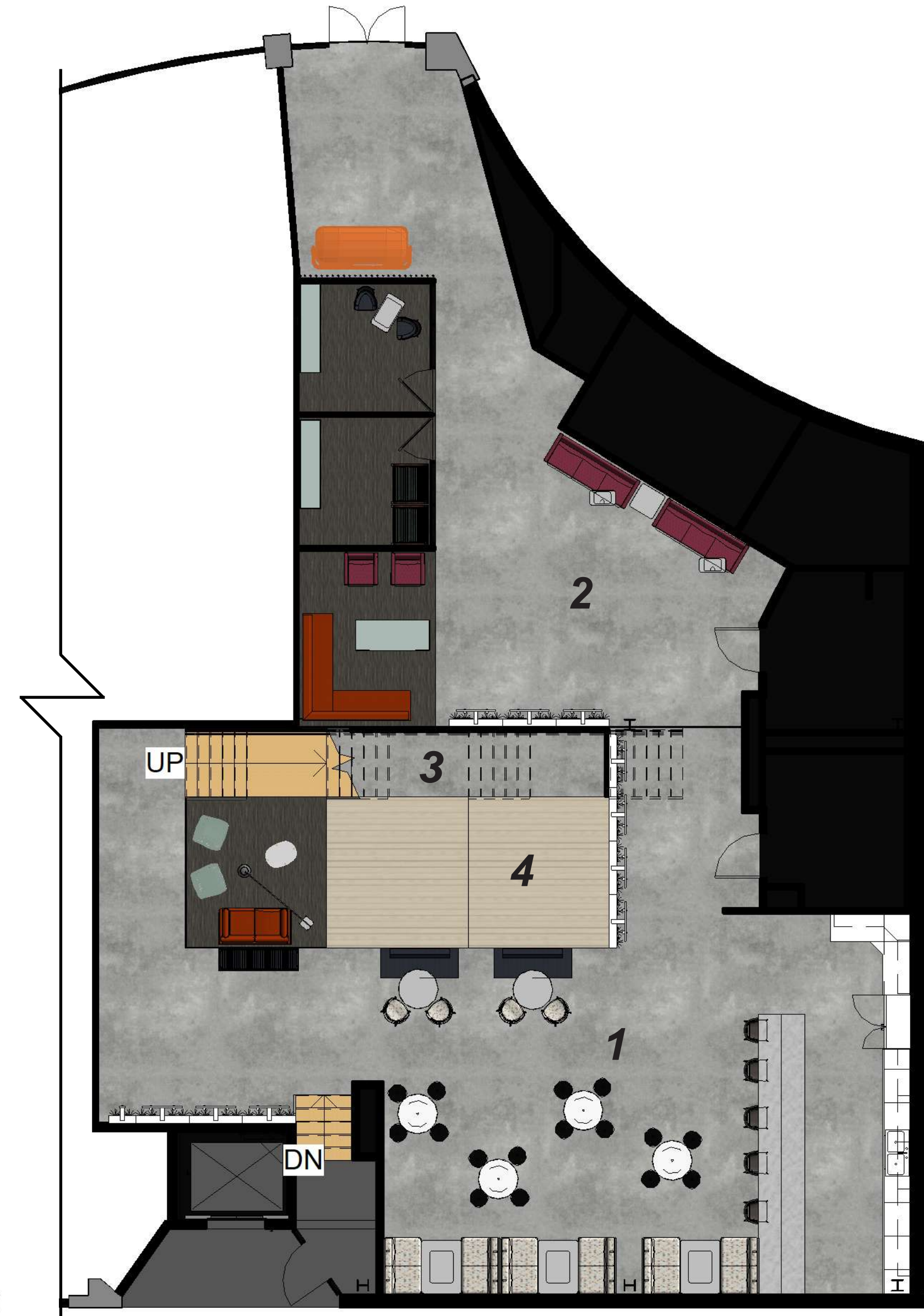
Room Numbers

- 1.....Work Cafe
- 2.....Quiet Lounge
- 3.....Stairs
- 4.....Platforms



RCP Level 1

Scale 1/8" = 1'-0"



Floor Plan Level 1

Scale 1/8" = 1'-0"

Ceiling Plan and Final Floor Plan

The materials used in this space are very earthy in order to incorporate biophilic design in the space while creating a fun environment. The spaces are separated by the central staircase and change in materiality in the ceiling plane. The quiet lounge has slats made of reclaimed wood, to ensure that sound gets absorbed as well as tying the space to the upper level.

Room Numbers

- 1.....Reception
- 2.....Inspiration Zone
- 3..... Project Team Spaces
- 4.....Stairs/ Platforms
- 5.....Open Office
- 6.....Balcony
- 7.....Video Conference Space
- 8.....Forum Space
- 9.....In between Space
- 10.....Private Offices
- 11.....Resource Center
- 12.....Waiting Area



Floor Plan Level 2

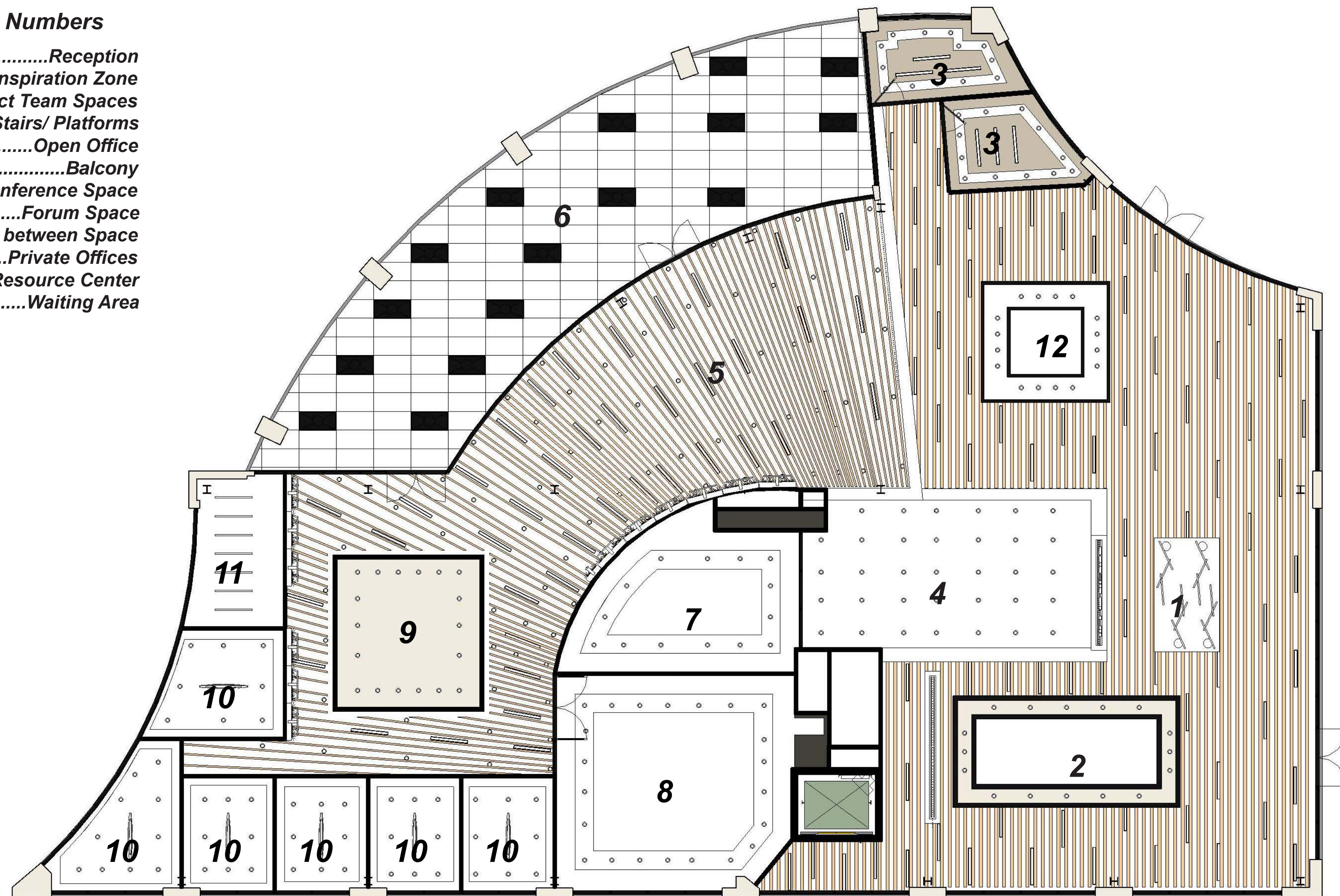
Scale 1/8" = 1'-0"

Final Floor Plan Level 2

The Upper level is organized in a public vs. private way. The entry spaces include areas where both employees and guests can utilize them (Reception, Waiting Area, and Inspiration Zone). There are 3 partition walls that separate the distinction between public and private space, allowing for views to the back parts of the office while keeping the distinction. The most back part of the office includes the private offices and an inbetween space for employees to use and still have privacy.

Room Numbers

- 1.....Reception
- 2.....Inspiration Zone
- 3..... Project Team Spaces
- 4.....Stairs/ Platforms
- 5.....Open Office
- 6.....Balcony
- 7.....Video Conference Space
- 8.....Forum Space
- 9.....In between Space
- 10.....Private Offices
- 11.....Resource Center
- 12.....Waiting Area



RCP Level 2

Scale 1/8" = 1'-0"

Ceiling Plan Level 2

The main spaces that people can see have highly elaborate ceiling planes, engaging the space as one. Separation is distinguished with separate planes above each given space. The inspiration zone, entry waiting area, and in between space all have lowered ceilings in order to make the spaces feel more exclusive. Since the Floor material is dark, the contrast of light reclaimed wood slats allow for the contrast needed in the space as well as sound absorption.

Rendering: Reception Level 2

This space consists of very neutral colors such as the birch and concrete being contrasted with bright warm colors on the furniture. The darkness of the reception desk allows for the desk to be the center of attention when you walk into the space.



Brushed Painted Steel

Used as the partition walls as well as material for windows and railings



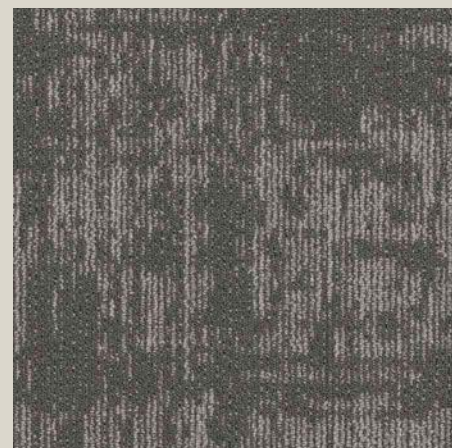
Espresso Wood Planks

Applied to counter bases in order to add a fun element to the Work Cafe



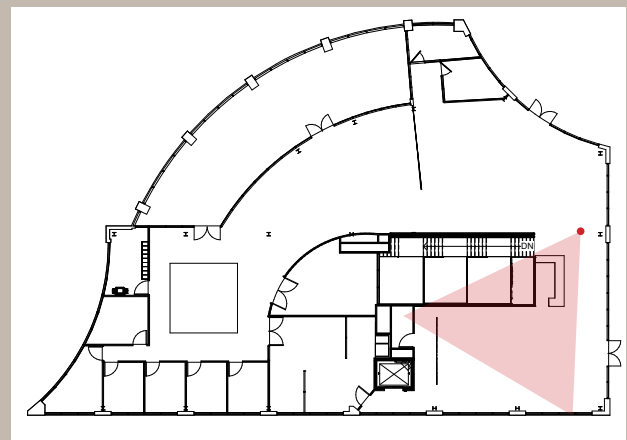
Glossy Birch

Reclaimed wood used on ceiling plane for sound absorption and aesthetic purposes



Concrete Flooring

Used throughout the second level in order to have a neutral grounding material



Rendering: Inspiration Zone

Level 2

Using furniture from various collections from Steelcase, I used different combinations of textures and materials in order to create a space that has multiple multi-purpose spaces as well as encourages collaboration throughout.



Coalesse Bench



Turnstone Campfire



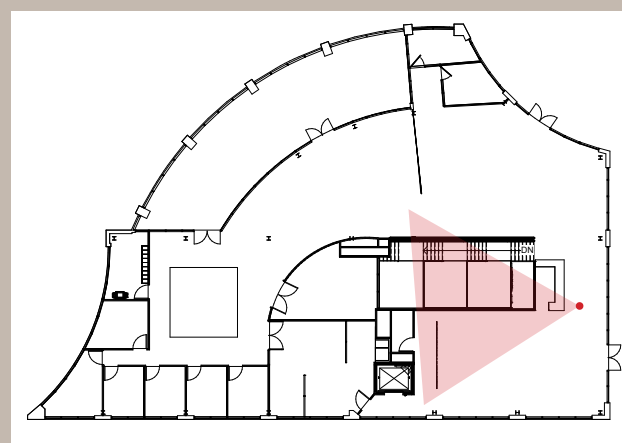
QiVi Stool



Levitt Sofa



Coalesse Seat



Rendering: Open Office Area

Level 2

In the open office area it was important to me to allow that employees who will sit at desks for most of the day have plenty of sunlight and the opportunity to go outside if they would like without having to go out of their way.



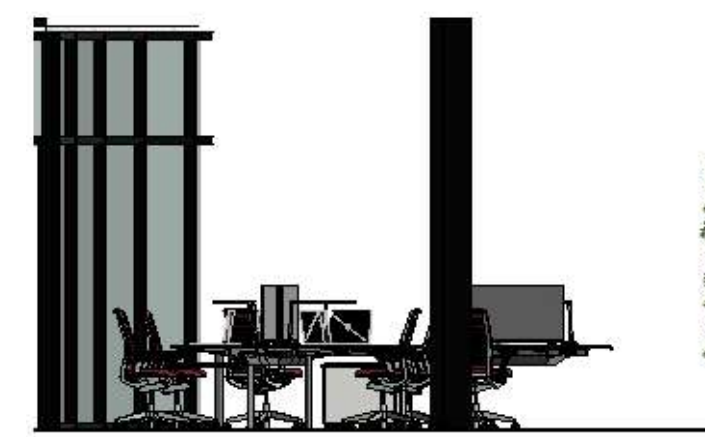
Think 465 Series chair



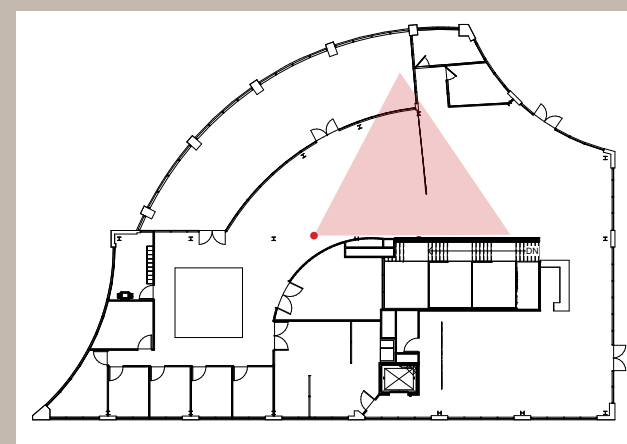
Frame one Dual Sided desk



Elevation of Open Office
Scale 1/8" = 1'-0"



Elevation of Open Office
Scale 1/8" = 1'-0"



Rendering: In between Space

Level 2

Creating a separate space within a space was the goal when creating this in between space. Allowing for the furniture to be grounded on a carpeted surface that is being mimicked by the ceiling plane separates it from the rest of the office.



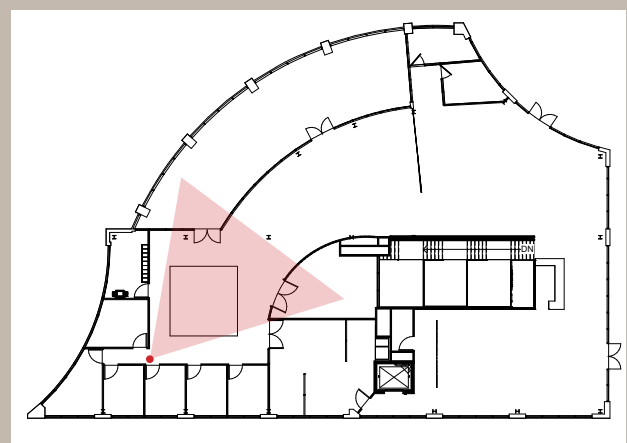
West Elm Work Collection



Bluedot Thataway Angled Sectional



West Elm Linear C Table

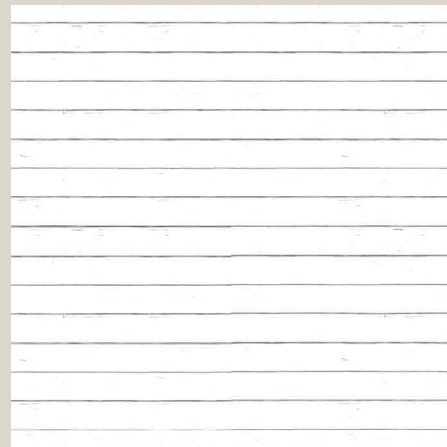


Rendering: Stairs and Platforms

Level 1



Brushed Painted Steel
Applied to Lighting Fixtures and Hardware



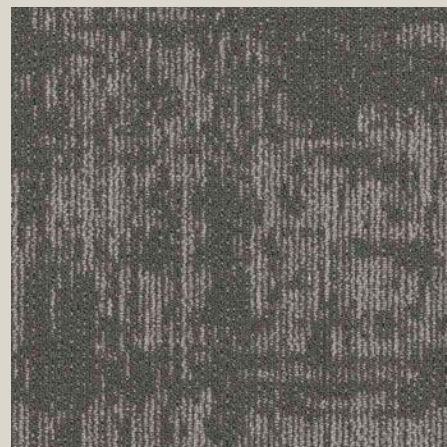
Ship lap Wall treatment
Horizontal lines allow for movement through the space once off of the platforms



Green Color Paint
Applied to counter bases in order to add a fun element to the Work Cafe



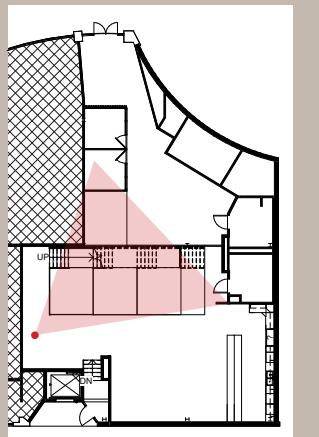
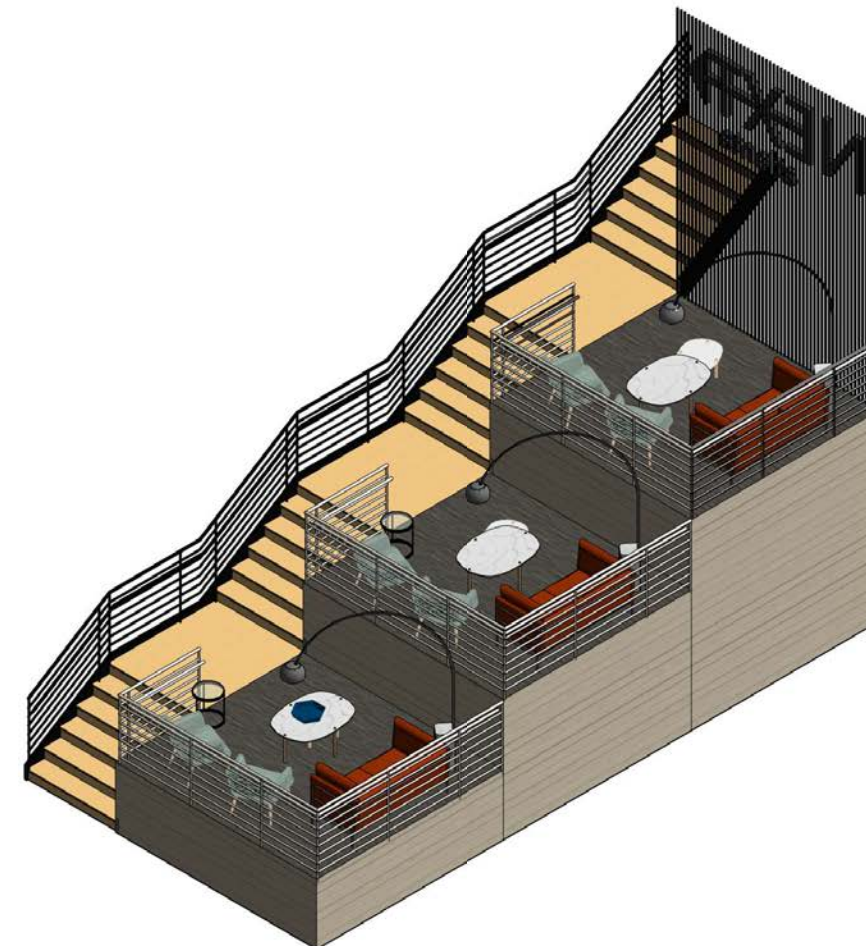
Glossy Birch
used on staircase in order to create distinction between space where movement occurs



Shaw Contract Carpet
Used as flooring on platforms in order to create a more comfortable seating area



Axonomic View of platform



Rendering: Work Cafe

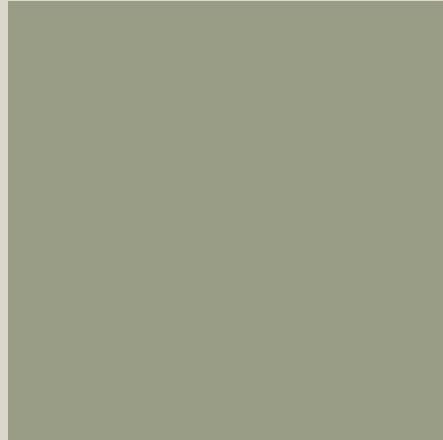
Level 1



Brushed Painted Steel
Applied to Lighting Fixtures and Hardware



Marble
Applied on counter tops to green color



Green Color Paint
Applied to counter bases in order to add a fun element to the Work Cafe



Monstera Leaf Wallpaper
Separates and encloses Work Cafe within the walls of a muted leaf pattern



Herringbone Tile
Back splash in the kitchen, neutral but adds texture to the space



Coalesse Seat



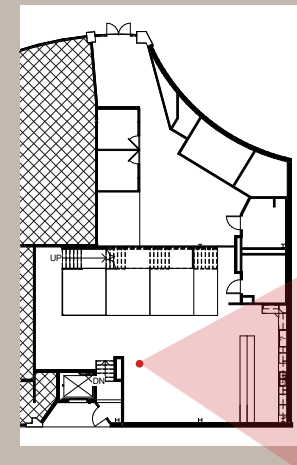
Coalesse Lox Stool



Coalesse Lox Chair



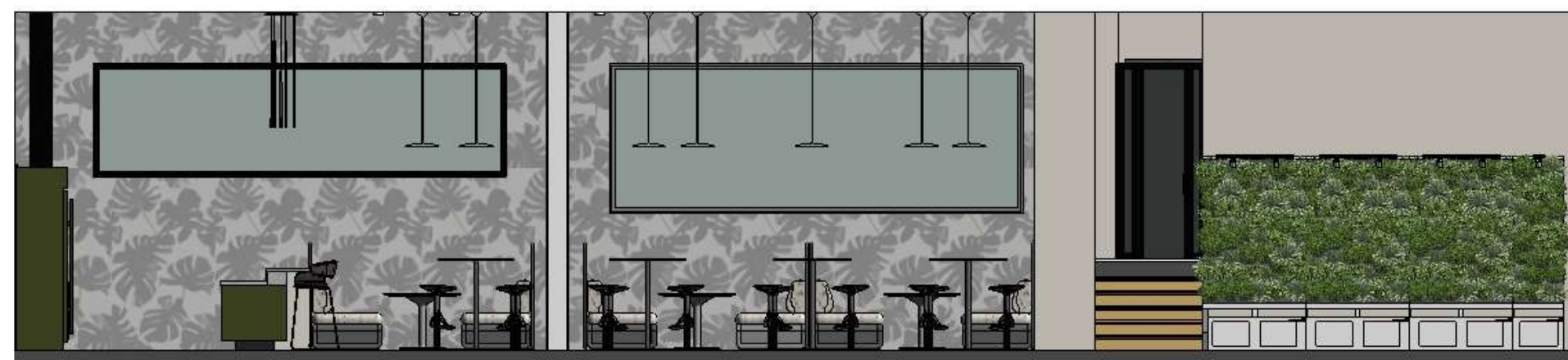
Enea Table



Rendering: Work Cafe

Level 1

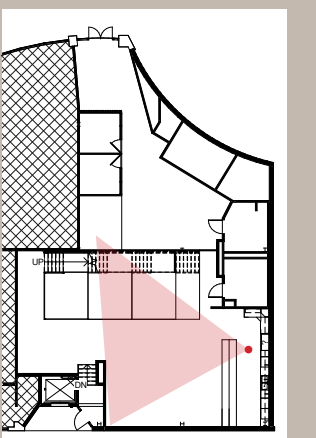
Allowing for a lot of collaboration to happen in this space, the social stairs being fully transparent to the floor below encourages that. Allowing talk and ideas to flow from space to space.



Elevation of Work Cafe
Scale 1/8"=1'-0"



Elevation of Work Cafe
Scale 1/8"= 1'-0"



Rendering: Quiet Lounge

Level 1

The quiet lounge allows for more collaborative spaces, both public and private. The ceiling treatment promotes sound absorption while tying back to the upper level. Private enclaves for phone calls or touch down meetings are also available in this space.



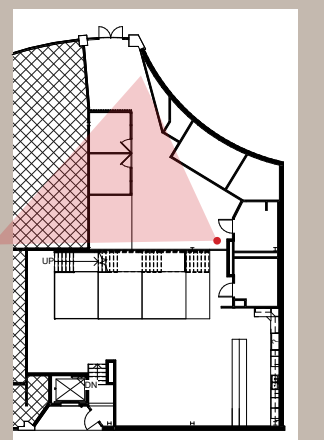
Coalesse Together



West Elm Linear C Table



Coalesse Seat



References

Figure 1

Unsplash. (n.d.). 27+ Plants Pictures: Download Free Images on Unsplash. Retrieved November 01, 2020, from <https://unsplash.com/s/photos/plants>

Figure 2

Pardes, A. (n.d.). Let Your Plants Play Music, and Gardens of Sound Will Bloom. Retrieved November 03, 2020, from <https://www.wired.com/story/plantwave-music/>

Figure 3-4 Citations from Timeline

Action-Office-c_1978: Cubicle design, Office design trends, Office cubicle design. (n.d.). Retrieved September 07, 2020, from <https://www.pinterest.com/pin/283515739018954875/>

Agustin Chevez Adjunct Research Fellow, & DJ Huppertz Senior Lecturer. (2020, June 22). A short history of the office. Retrieved September 07, 2020, from <https://theconversation.com/a-short-history-of-the-office-82000>

Art History Timeline: Western Art Movements and Their Impact. (2019, November 04). Retrieved September 07, 2020, from <https://www.invaluable.com/blog/art-history-timeline/>

The evolution of office design. (n.d.). Retrieved September 07, 2020, from <https://www.morganlovell.co.uk/the-evolution-of-office-design>

History of Office Design: From the 1700's to Today: K2 Space. (2019, November 01). Retrieved September 07, 2020, from <https://k2space.co.uk/knowledge/history-of-office-design/>

Rietveld Landscape, R. (2020, September 05). The End of Sitting - Projects. Retrieved September 07, 2020, from https://www.raaaf.nl/en/projects/927_the_end_of_sitting/962

Figure 5-8

Howarth, D. (2013, October 20). Special feature: Stairs you can sit on. Retrieved November 03, 2020, from <https://www.dezeen.com/2013/10/20/special-feature-stairs-you-can-sit-on/>

